

General Data Sheet for Prof-UIS 2.82

Prof-UIS is a feature-rich MFC extension library for Microsoft® Visual C++® developers, which provides modern graphical user interface for Windows® applications.

Key Features

Supported Themes

- Office 2007 (Blue, Black, Silver and Release 1)
- Visual Studio 2005 and Visual Studio 2008 **NEW!**
- Office 2003 and Office 2003 with Windows Classis style
- Office XP
- Office 2000
- Windows XP Native
- Support for High Contrast.

Ribbon User Interface

- Ribbon bar
- Theme support for Ribbon UI
- RTL support for Ribbon UI

Dockable Toolbars

- Complete run-time customization support trough
 - Customize dialog
 - Chevron menu
 - Alt-key customization
- Tabbed toolbars
- Consistent resizable combo, edit and date fields
- Advanced buttons/menu items
 - Split
 - Color picker
 - Undo/redo
- Slider/scroll button
- Support for large icons
- Built-in theme switcher toolbar

Visual Studio .NET/2005 Control Bars

- Docking to the main frame and into dynamic tab containers
- Autohide feature
- Visual Studio 2005/2008 **NEW!** docking markers
- Dynamic control bars
- Custom docking outline
- Fixed-size control bar
- Caption flashing

Enhanced Controls Consistent with Prof-UIS Themes

- Date picker
- Date and time picker
- Time duration control
- Page Navigator (Navigation Pane in Microsoft Outlook 2003/2007)
- Button
- Color picker button
- Combo box
- Multicolumn combo box
- Edit control
- Check box
- Radio button
- Group box
- Hyperlink button
- Status bar
- Check list box
- Splitter window
- Slider control

- Scroll bar
- Shortcut list
- Content pop-up window

Resizable Dialogs

- Resizable dialog with anchoring support
- Resizable property sheet and property page
- MDI child windows dialog
- Color selection dialog

Image Editing

- Image editor for editing icons and bitmaps
- Icon editor dialog

Customization

- Customizable toolbars, menus and keyboard accelerators
- Customizable dialog
- Quick toolbar customization
- ALT customization
- Built-in icon editor dialog

Menus

- Dockable menu bar
- Pop-up menu
- Palette menu
- Tear-off menu
- Expandable menu
- Menu animation
- Color selection menu
- Date picker menu
- Combo, edit and date fields
- Undo/redo menu
- Balloon tooltip
- Built-in theme switcher menu

Tab Controls and Tab Page Containers

- Tab controls, MDI tabs and tab page containers
- Whidbey tabs
- One Note tabs
- Flat tabs
- Button tabs
- Visual Studio .NET tabs
- Visual Studio 2005 tabs
- Native XP tabs
- Office 2007 tabs

Page Container

- Outlook-style page container
- 3D Studio MAX-style page container
- Customizable appearance

Grid Controls

- Data grid
- Tree grid **NEW!**
- Property grid
- Report grid
- Grid Cells
- Filtering and sorting capabilities **NEW!**
- Printing and print preview for grids

Skins

- Skin support
- Black Diamond skin
- Aqua skin

OLE Automation Support

- OLE Automation objects for accessing menus and toolbars by using scripting languages available within the Active Scripting framework like VBScript or JScript

Visual Studio Compatibility

- Compatible with Microsoft Visual C++ 6.0/7.0/7.1/8.0/9.0
- Application Wizard Microsoft Visual C++ 6.0/7.0/7.1/8.0/9.0
- Integration Wizard for building any library configuration, setting library paths, adding the Application Wizard to Visual Studio and integrating Prof-UIS Help with Visual Studio Help
- MSDN integrated Help

Supported Operating Systems

- 32-bit Windows 95/98/98SE/ME
- 32-bit Windows NT/2000/XP/2003
- 32-bit Windows Vista
- 64-bit Windows XP/2003
- 64-bit Windows Vista

FOSS Software, Inc.

185 Lowell Rd.
Salem, NH 03079
Phones: (603) 894 6425, (603) 894 6427
Fax: (603) 251 0077
E-mail: info@prof-uis.com

Technical Support

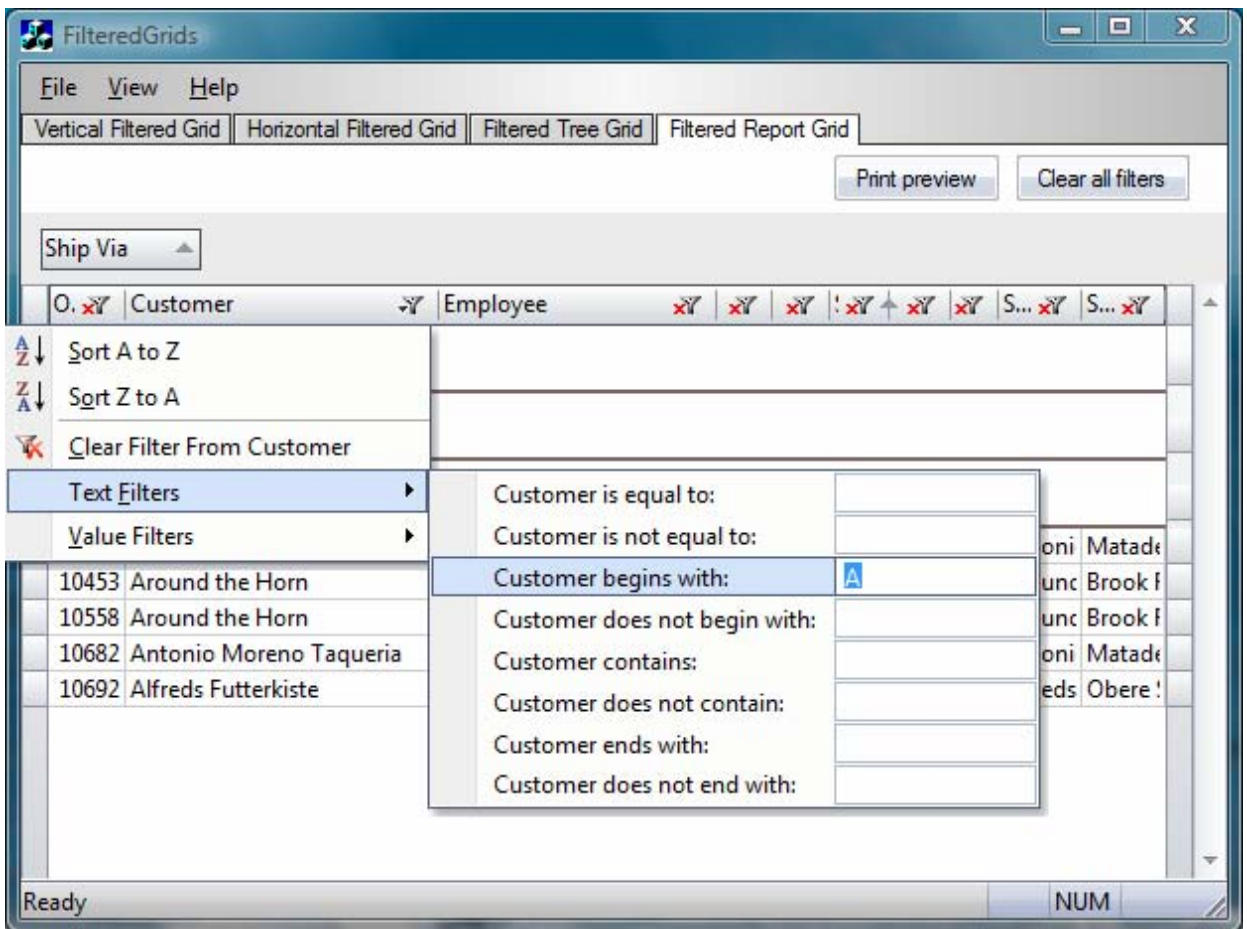
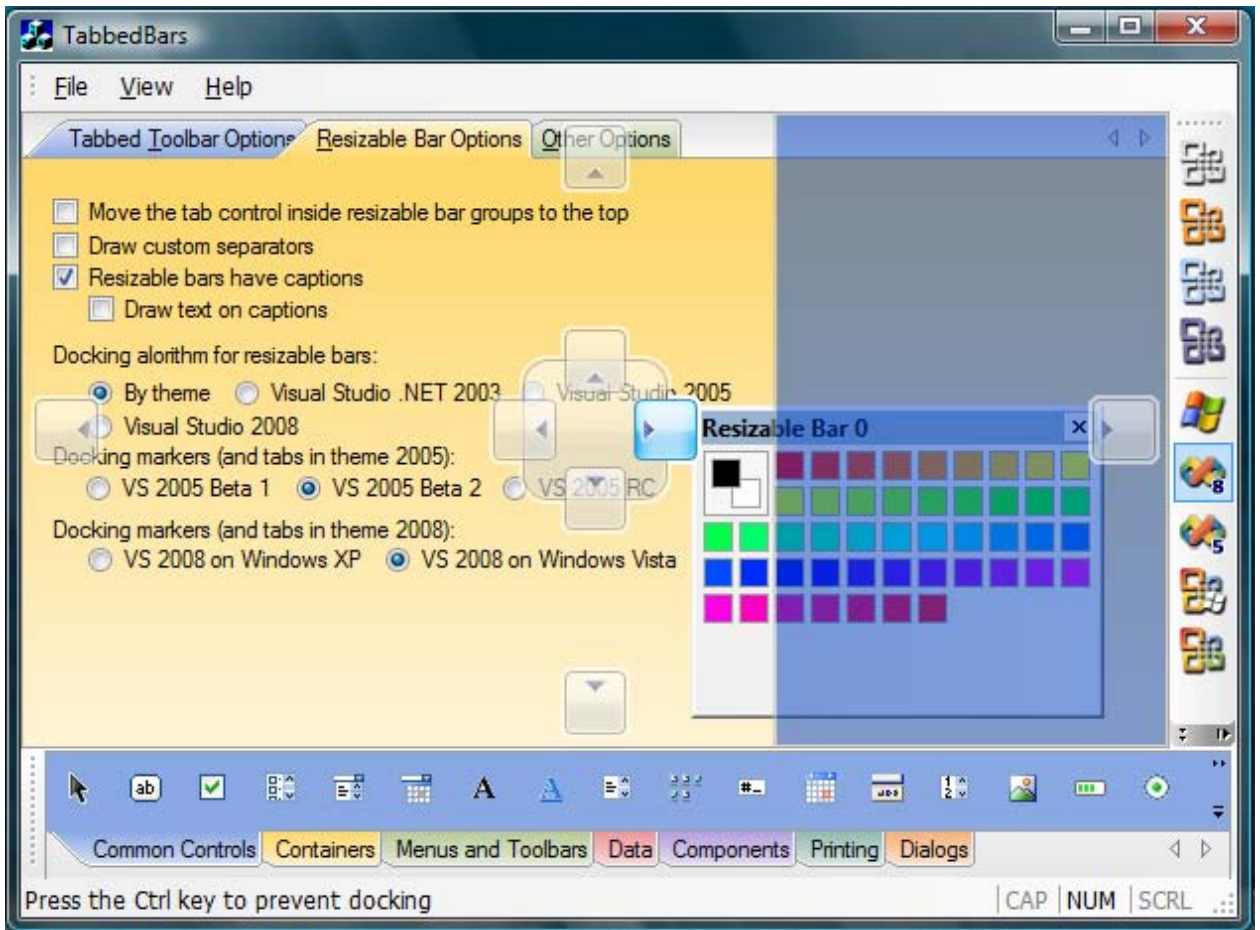
Forum: <http://prof-uis.com/forum.aspx>
E-mail: support@prof-uis.com

Miscellaneous Features

- Support for Windows Vista/XP quality icons on any Windows OS starting from 95/NT4
- Multiple monitor support
- Multi-profile UI persistence and archive-based serialization of UI state with command usage statistics support
- Full screen mode
- Generalized template window classes for various common tasks like injecting non-client area borders into any window, providing flicker-free repainting, and anchoring child windows to the borders of their parent window
- Support for Right-To-Left (RTL) languages
- Support for ANSI, MBCS and Unicode

Supported Languages

Arabic, Armenian, Belarusian, Bosnian, Bulgarian, Brazilian Portuguese, Canadian French, Chinese Simplified, Chinese Traditional, Croatian, Czech, Danish, Dutch, Farsi, French, German, Greek, Hungarian, Indonesian, Italian, Japanese, Khmer, Korean, Latvian, Lithuanian, Norwegian, Polish, Romanian, Russian, Serbian, Slovenian, Spanish, Swedish, Turkish, and Ukrainian



The product names used in this document are for identification purposes only. All trademarks and registered trademarks are the property of their respective owners. Microsoft, Windows, Visual Studio, Visual Studio.NET, Visual C++ and Outlook are registered trademarks of Microsoft Corporation in the United States and/or other countries. 3D Studio MAX is a registered trademark of Autodesk, Inc. in the United States and/or other countries. Other product and company names may be the trademarks of their respective owners.