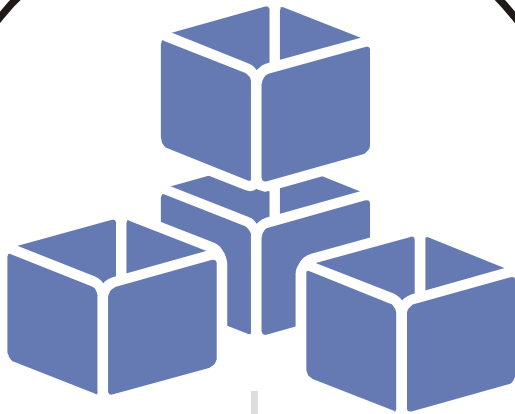


Prof-UIS Frame Features



White Paper

Published: January 2005

FOSS Software, Inc.

151 Main St., Suite 3

Salem, NH 03079

Phones: (603) 894 6425, (603) 894 6427

Fax: (603) 251 0077

E-mail: info@prof-uis.com

Technical Support

Forum: <http://prof-uis.com/forum.aspx>

E-mail: support@prof-uis.com

Contents

| | |
|---|-----------|
| Introduction..... | 3 |
| Why choose us? | 4 |
| Set of Samples | 4 |
| CHM Help..... | 4 |
| Technical Support | 4 |
| Royalty Free Licensing..... | 4 |
| Excellent Value | 4 |
| Prof-UIS Feature List..... | 5 |
| GUI themes..... | 5 |
| Dockable menu bar..... | 6 |
| Dockable toolbars..... | 7 |
| Full customization | 7 |
| MDI tabs | 9 |
| MDI windows dialog..... | 10 |
| System menus | 11 |
| Context menus..... | 12 |
| Combo/edit field..... | 13 |
| Scroll bar/slider and drop-down button..... | 14 |
| Color pop-up menu | 15 |
| Menu features | 17 |
| Status bar control..... | 18 |
| Full-screen mode | 19 |
| User interface persistence..... | 19 |
| Context-sensitive help | 20 |
| Multiple monitor support | 20 |
| MBCS and Unicode versions..... | 20 |
| Multilanguage support | 20 |
| Complete control at design and runtime..... | 21 |
| Summary | 24 |

Introduction

No one can argue the importance of a well designed graphical user interface, which is essential to the success of applications that the GUI serves to. With attractive, feature rich, and robust interface your applications will bring new customers and profit to your company.

At FOSS Software, we develop tools that enable our customers to implement the latest user interface design in their applications. With Prof-UIS Frame Features, we offer sophisticated user interface facilities including the dockable menu bar and toolbars, an enhanced status bar, fully customizable menus, toolbars and keyboard accelerators, on-the-fly changeable Microsoft Office 2000/XP/2003 and Visual Studio 2005 GUI themes, multi profile UI persistence, MDI tabs, and much more. The Property Builder property pages allow you to implement supported features in design mode within minutes.

Prof-UIS Frame Features is an ActiveX control that can be used in most of the form designers supporting the ActiveX container technology including:

- Visual Basic 6.0
- Visual Basic 7.0/7.1
- Visual Java++ 6.0
- J# 7.1/8.0
- C# 7.0/7.1/8.0
- Internet Explorer (HTA)

It can also be used in any other environment that provides access to a handle of the window in which the dockable windows supported by Frame Features should be displayed.

The Frame Features is based on Prof-UIS, an MFC extension library, that is successfully used by thousands of developers worldwide.

We are committed to provide the best possible technical support for our customers. Technical support is available on our web site or via e-mail on a 24/7 basis with absolutely no per-incident charges.

Why choose us?

When purchasing Prof-UIS Frame Features, you get a thoroughly tested ActiveX control that allows you to easily provide your applications with the most up-to-date graphical user interface. The product includes the following benefits:

Set of Samples

Sample applications with full source code are aimed to demonstrate you the key features of the product and help you implement them in your own projects. Using copy/paste of sample codes may also boost developing particular parts of your own applications.

CHM Help

Compiled HTML help comprises detailed information on how to use the control. It also includes the reference of the all interfaces with which you can manage the interface dynamically at run time.

Technical Support

When purchasing the library, you may select a 90 day or a 1 year technical support subscription. We are committed to provide the best possible technical support for our customers. Technical support is available via e-mail/phone or through access to the Priority Support area in our Forum 24 hours a day and 7 days a week with absolutely no per-incident charges.

Royalty Free Licensing

Our royalty plans and license agreements are very simple. You are granted to distribute required binary files with your applications without any additional fees.

Excellent Value

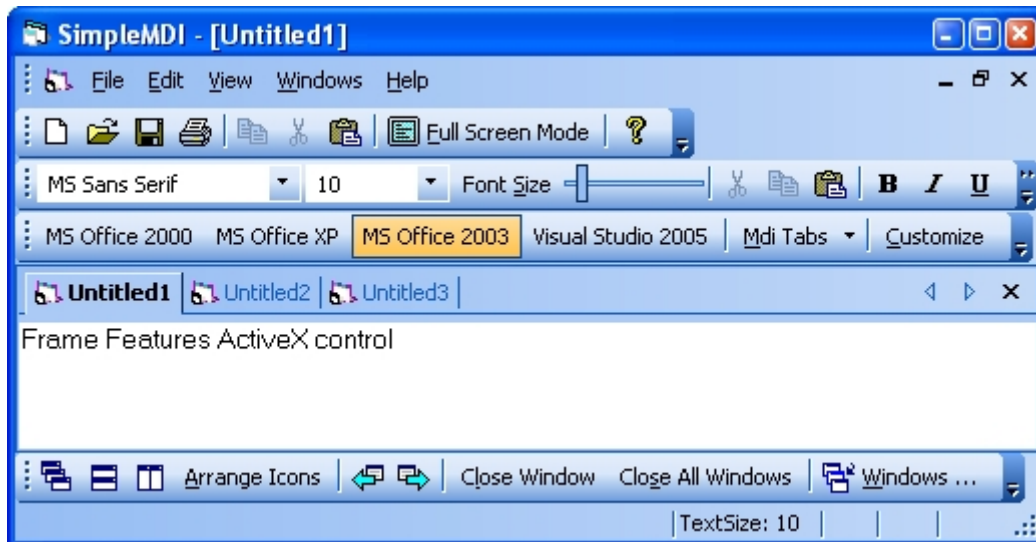
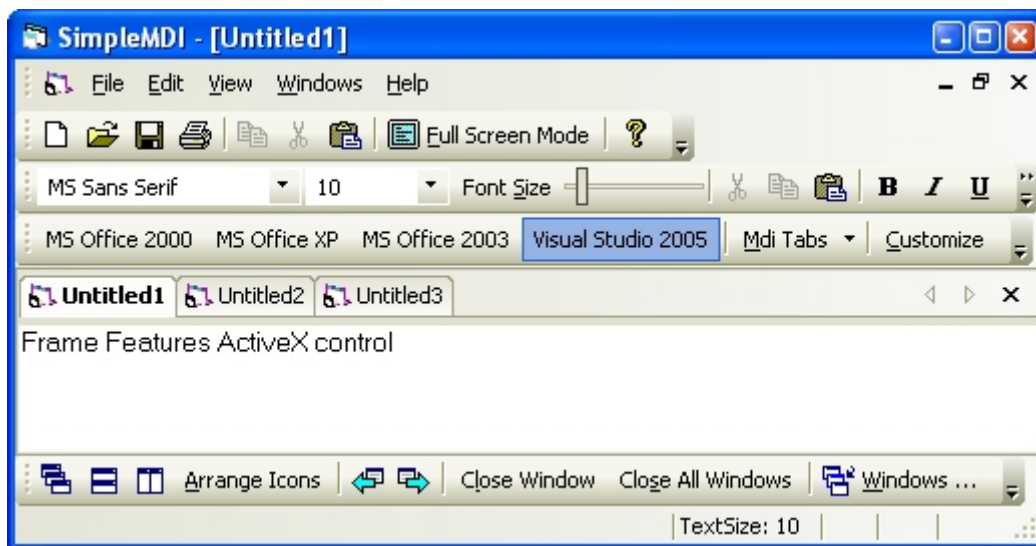
Prof-UIS Frame Features with One Year Technical support is priced at \$275 (\$195, if you select a 90 days technical support subscription), which is second to none for such products. This includes support and updates for a full year after purchase. Our current policy is that we will release not less than four updates for Frame Features every year. When you purchase a subscription (\$125), you get both support and updates for a year.

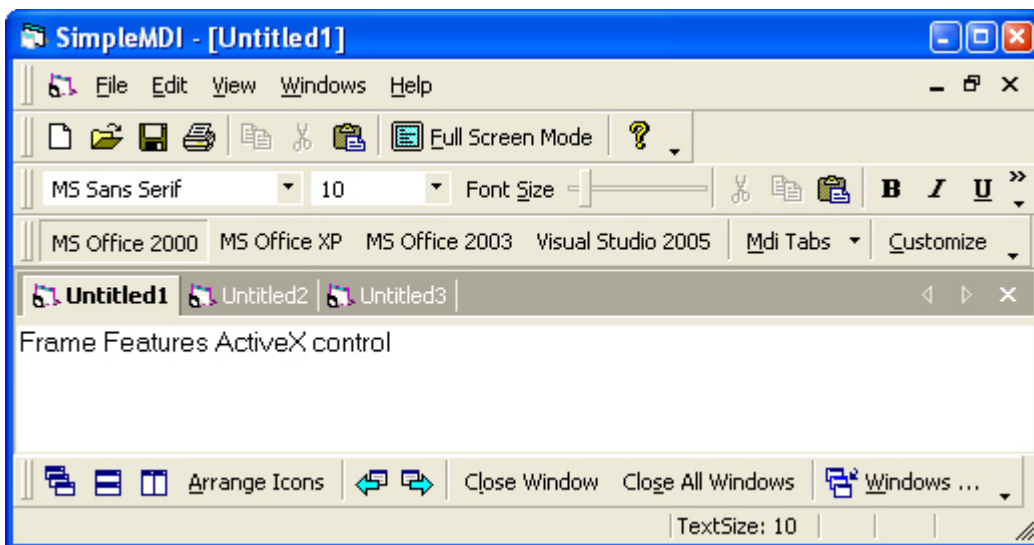
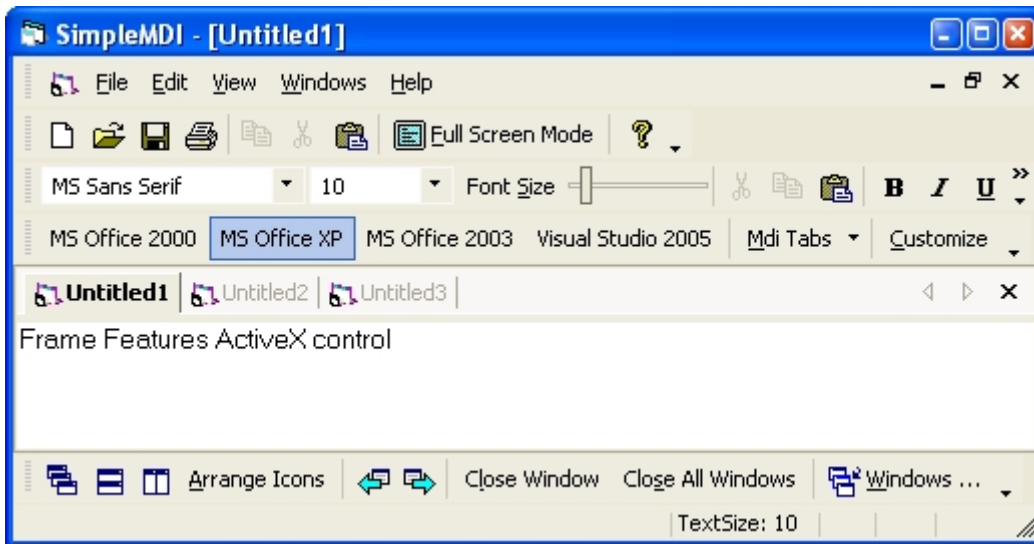
Prof-UIS Feature List

The Frame Features ActiveX control is a simple to use yet powerful tool to enrich your application with the newest and most popular features of toolbars, menus, and status bars available in the latest Microsoft products including Office XP/2003 and Visual Studio NET/2005. Whether you are using VB 6.0, VB.NET, C#, J#, or some other language, you have probably already encountered the problem when you wanted to implement a modern GUI in you application but failed because of lack of appropriate tools in standard IDEs. So, Frame Features is probably is what you are searching for. Below are highlighted the key features of the control.

GUI themes

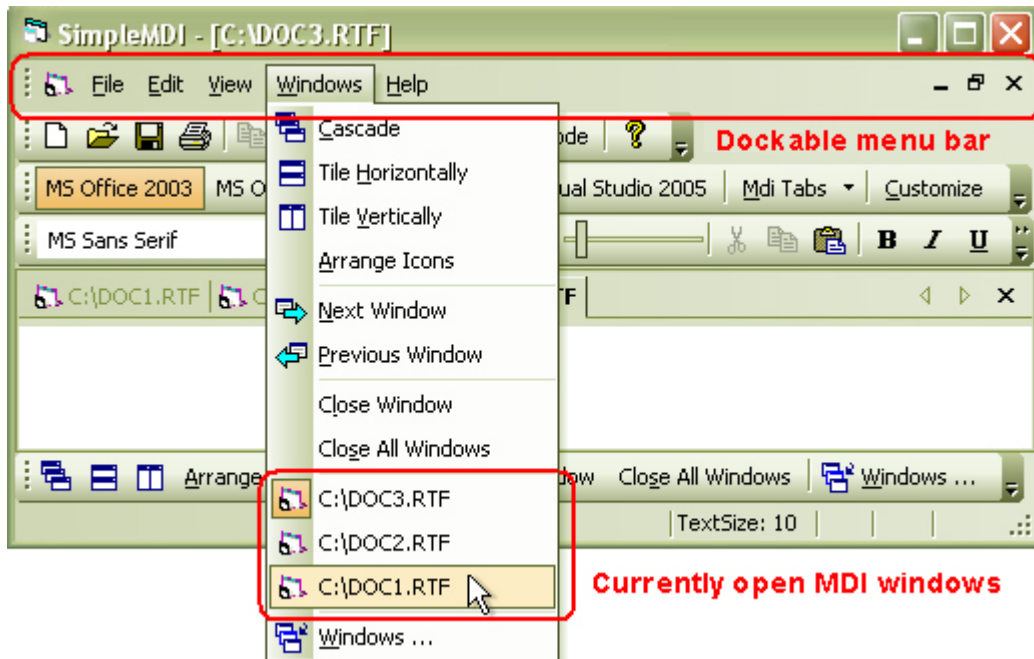
Frame Features supports the GUI themes similar to those used in Microsoft Visual Studio 2005 and Office 2000/XP/2003 changeable on-the-fly at runtime. So, let the user of your application to select the theme most agreeable to their tastes.





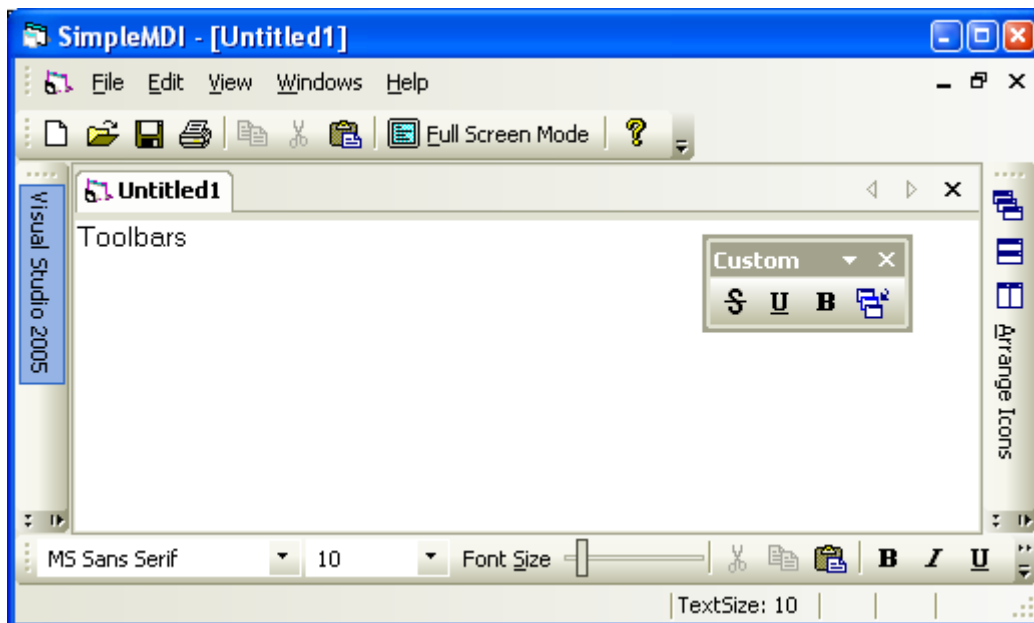
Dockable menu bar

Dockable menu bar with automatic support for the list of open MDI windows. Such a toolbar can be floating or docked to any side of the main frame window.



Dockable toolbars

The Prof-UIS toolbar can be floating or docked to any side of the main frame window.

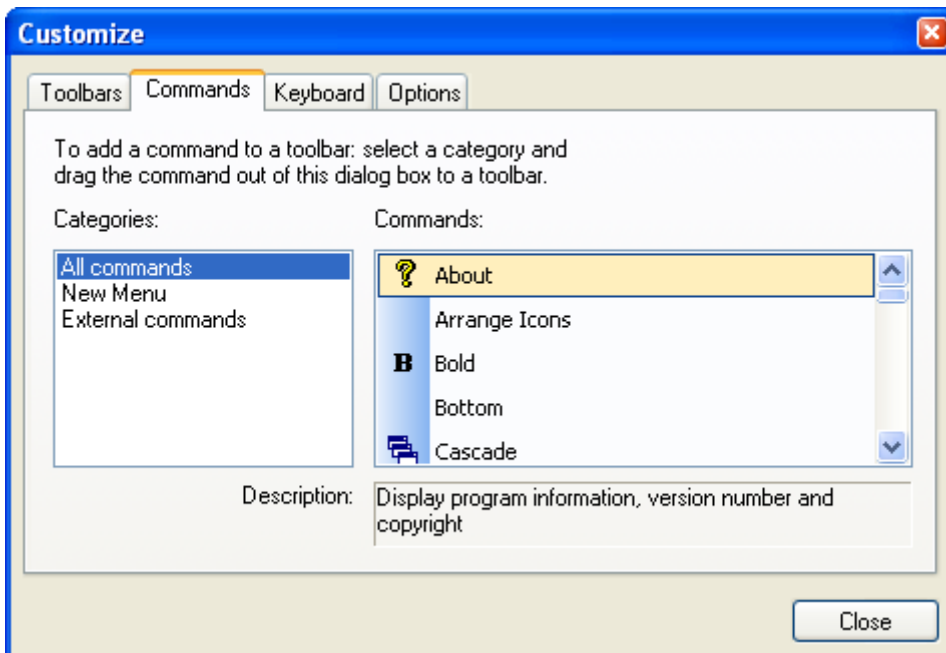
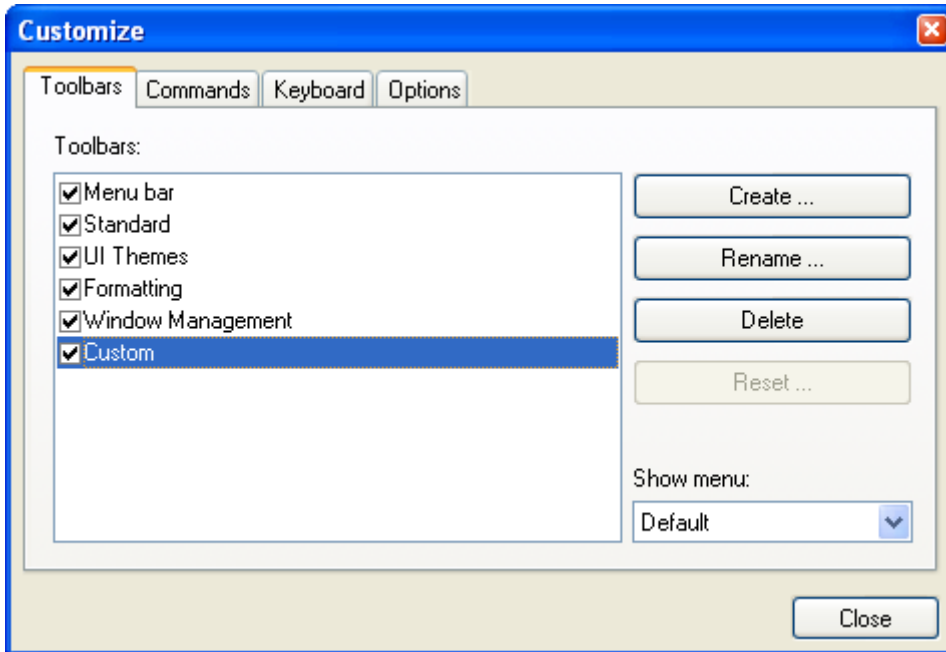


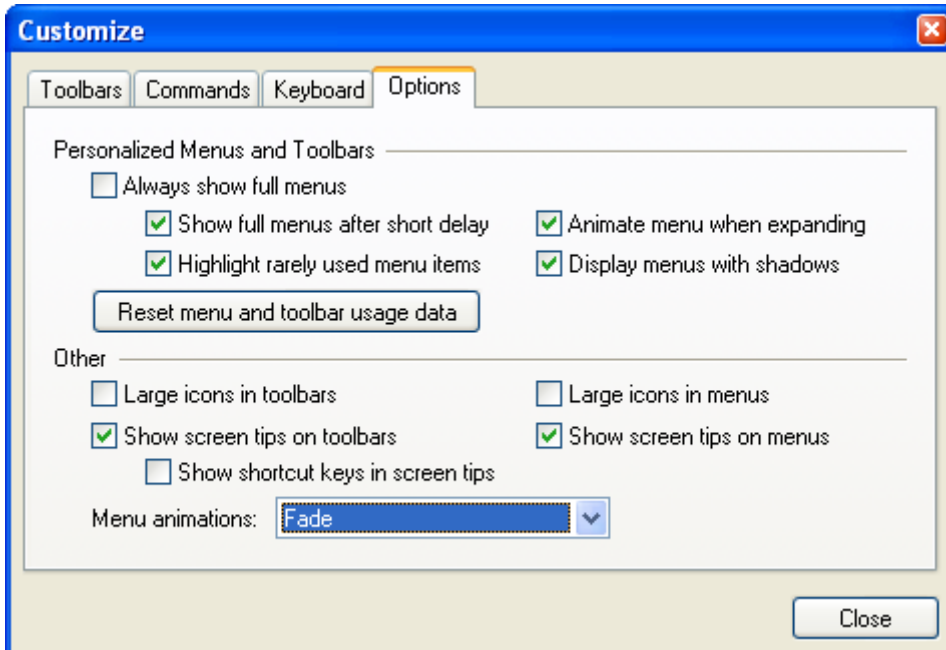
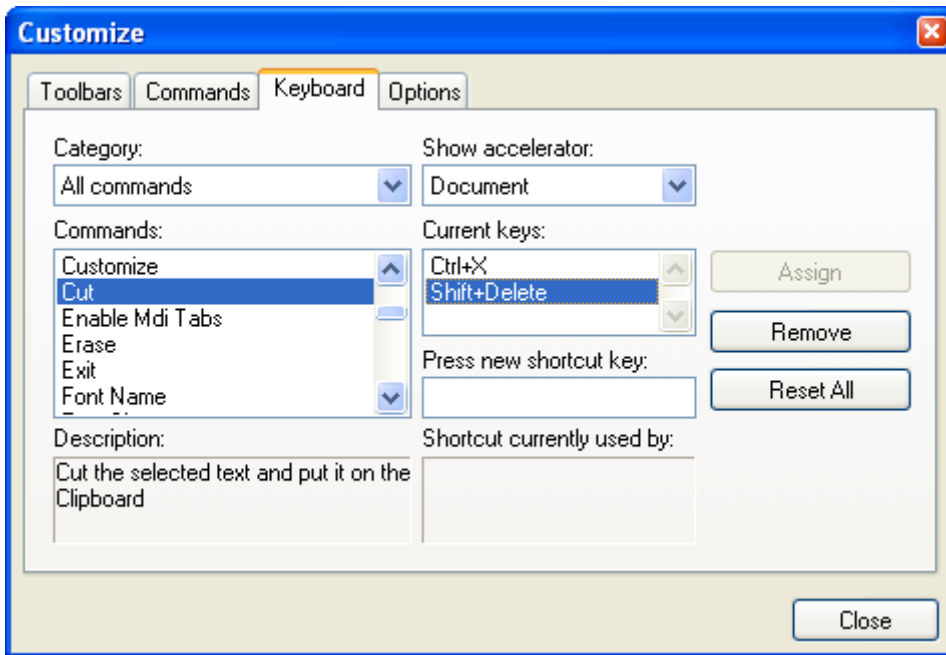
Full customization

Frame Features supports customizable toolbars, menus, and keyboard accelerators. By pressing and holding down the Alt key, you can quickly rearrange/remove any toolbar/menu command by dragging it with the mouse pointer. Or you can open the Customize dialog and customize the user interface in the way the best fits you:

- create/delete/rename a custom toolbar or restore any built-in toolbar including the menu bar to its original default settings on the Toolbars tab
- create a custom menu and rearrange/remove any toolbar/menu command in the toolbars and menus on the Commands tab
- add/remove/reset a shortcut for any command on the Keyboard tab

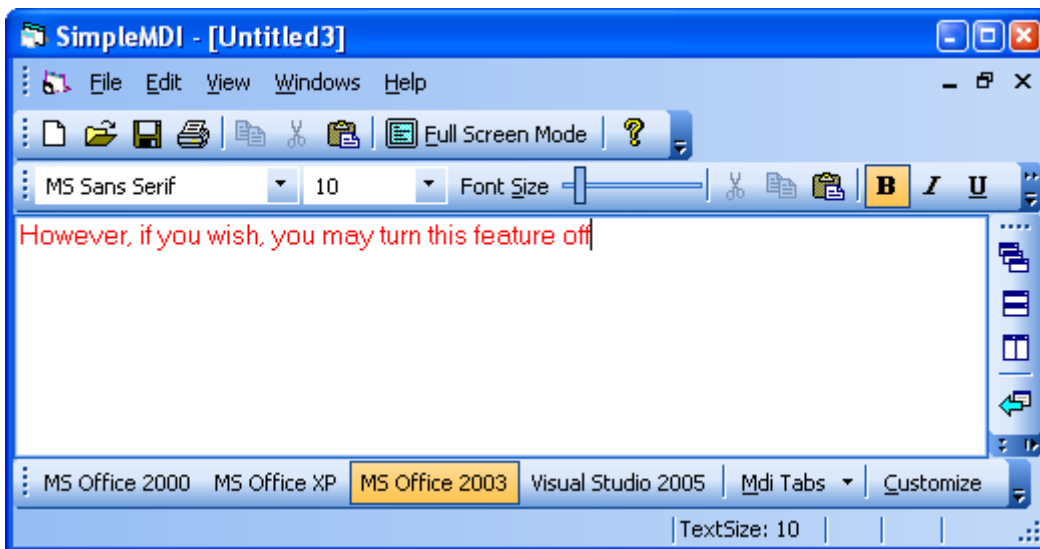
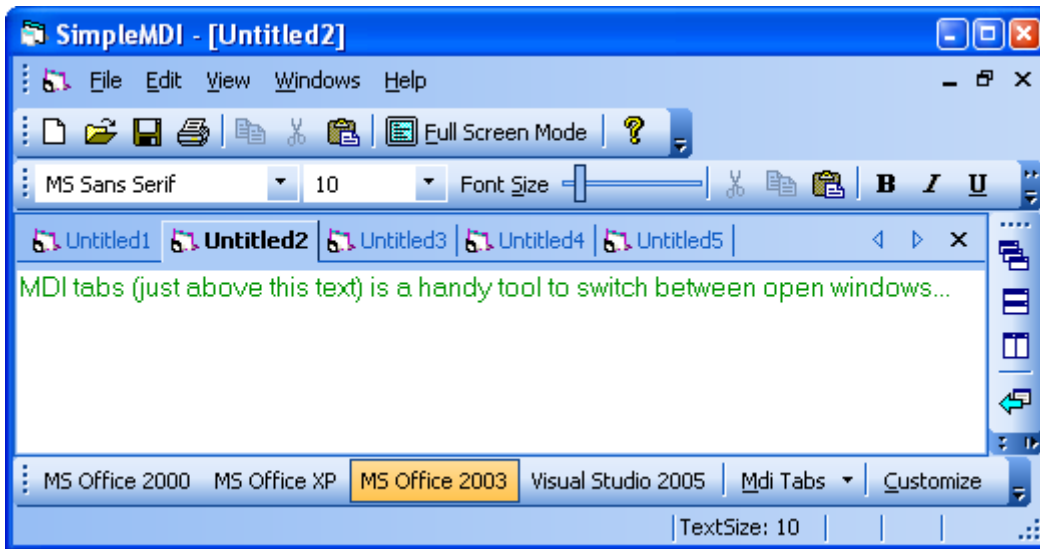
- customize the general properties of the user interface including menu animation, menu shadow, large/small icons, menu and more on the Options tab





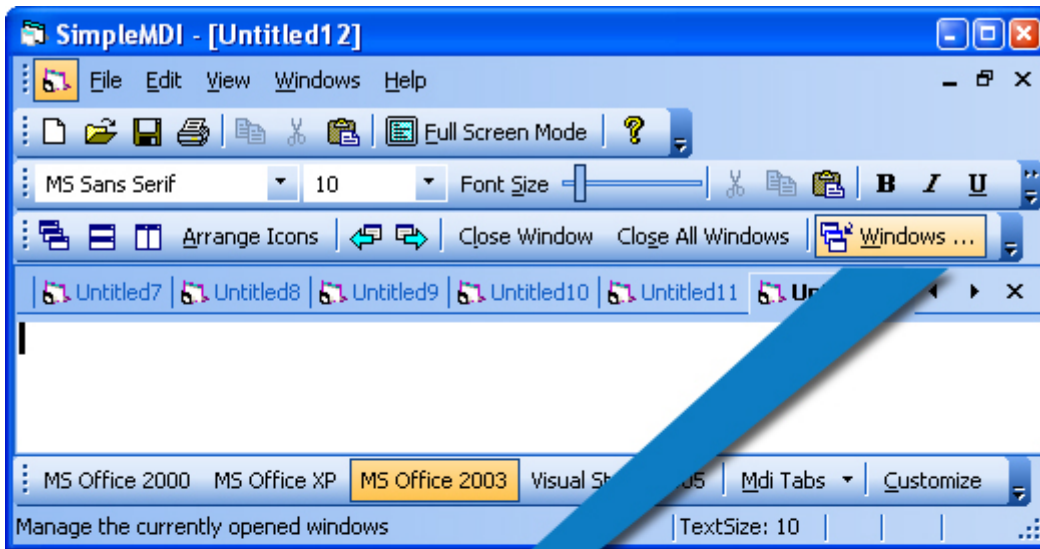
MDI tabs

MDI tabs is a handy tool to navigate through open MDI windows. This feature can be turned on or off.

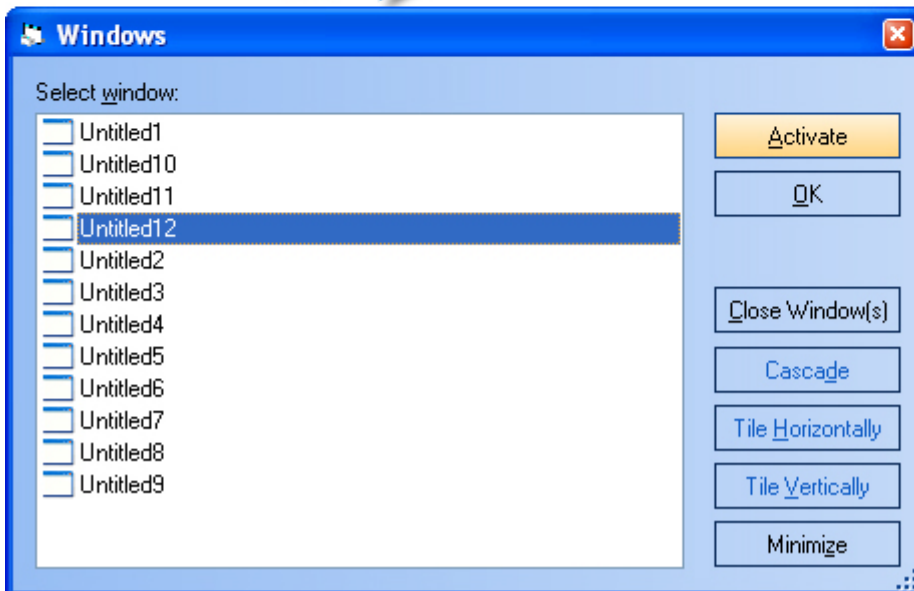


MDI windows dialog

There may be a situation when you have many open windows in your application. This is the case when the MDI windows dialog may be useful.

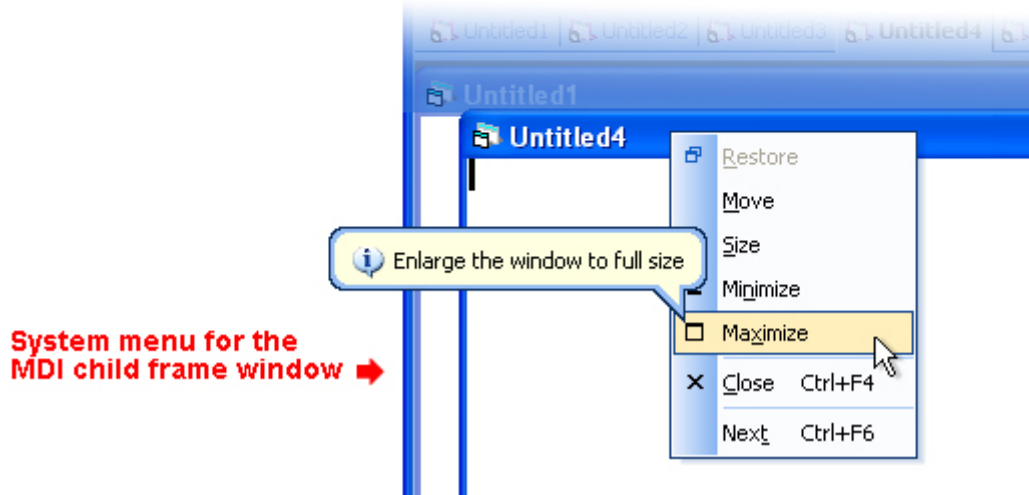
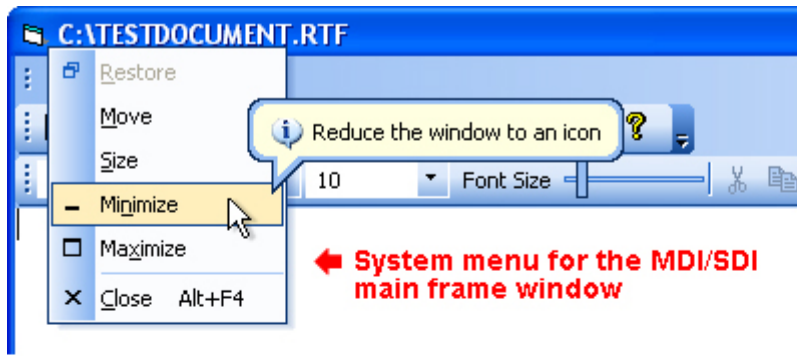


MDI windows dialog ↓



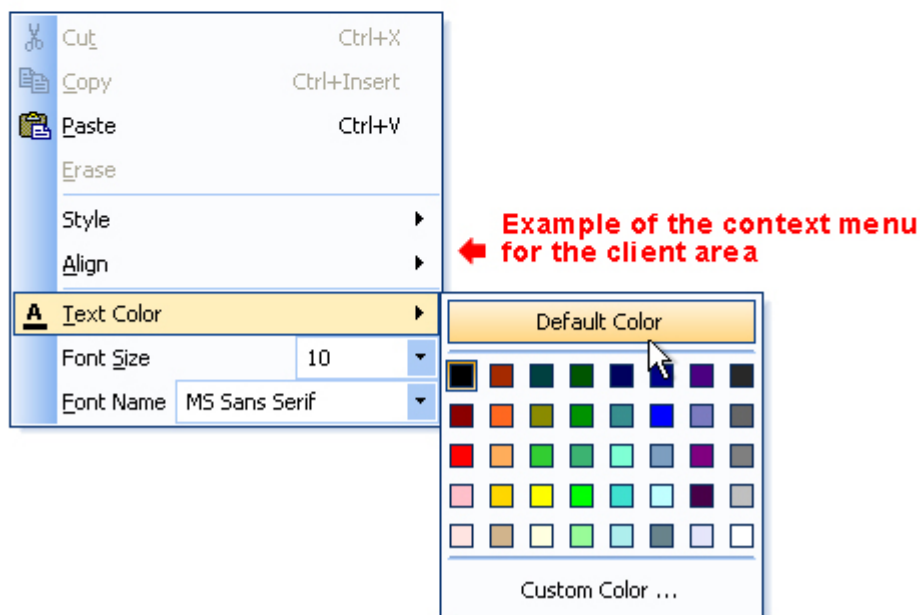
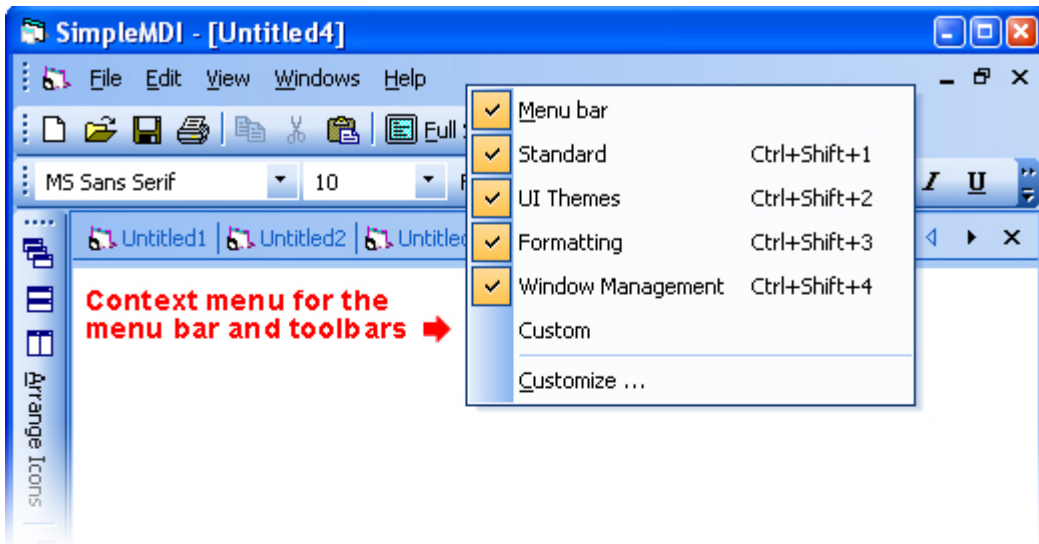
System menus

The system menus for the MDI/SDI main frame and MDI child frame window have been specially designed to harmonize with the general style of the graphical user interface provided by Frame Features.



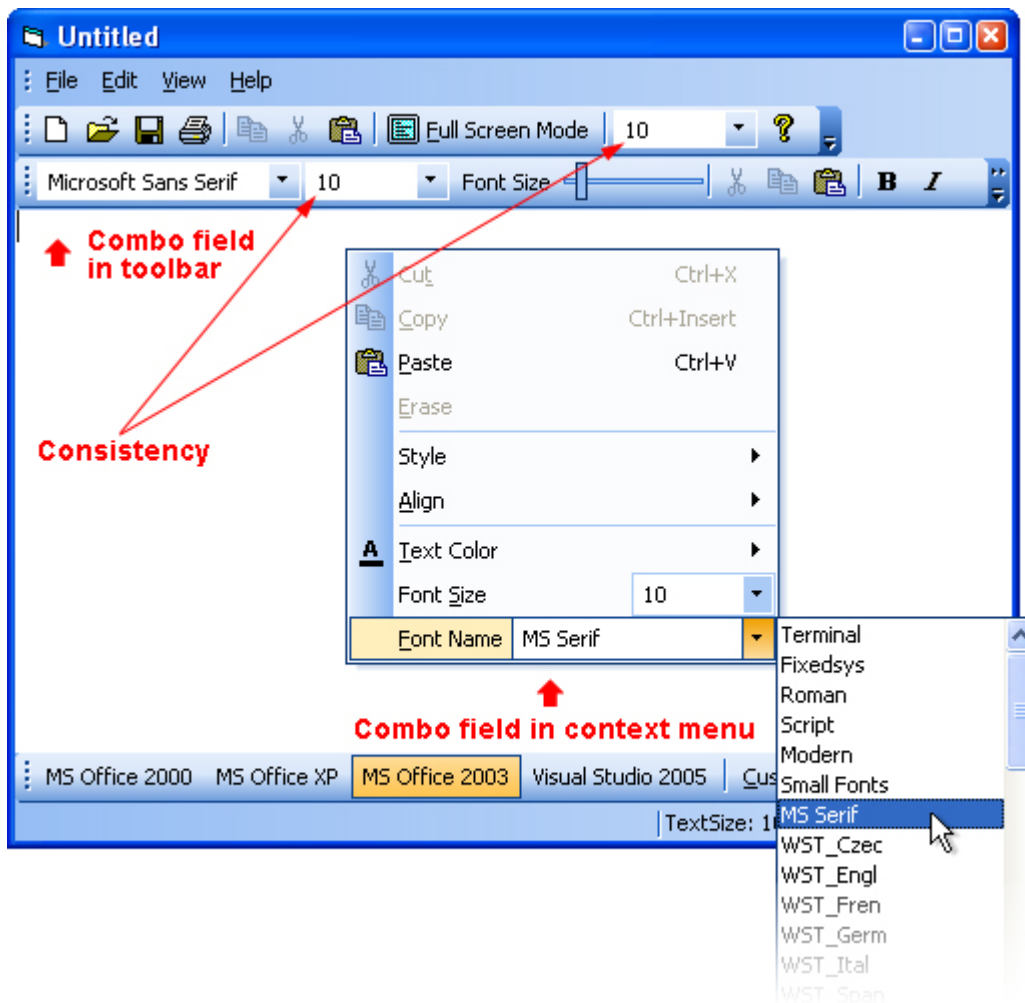
Context menus

Frame Features automatically provides your application with the context menu for the menu bar and toolbars, which allows the user to show/hide any toolbar including the menu bar and display the Customize dialog. You can also implement one or more context menus for the client area of the MDI/SDI child frame window, which are based on the menu trees available in the application.



Combo/edit field

For sure, you will need to have one or more edit controls and/or combo boxes. Frame Features allows you to easily put these controls on toolbars or add them to menus. In the Customize mode, you may make a copy of this control (field) and put it on wherever you want (e.g. on some toolbar or in a menu). Such cloned fields are consistent, that is, by changing the contents of a particular field, the other ones are modified synchronously by Frame Features.

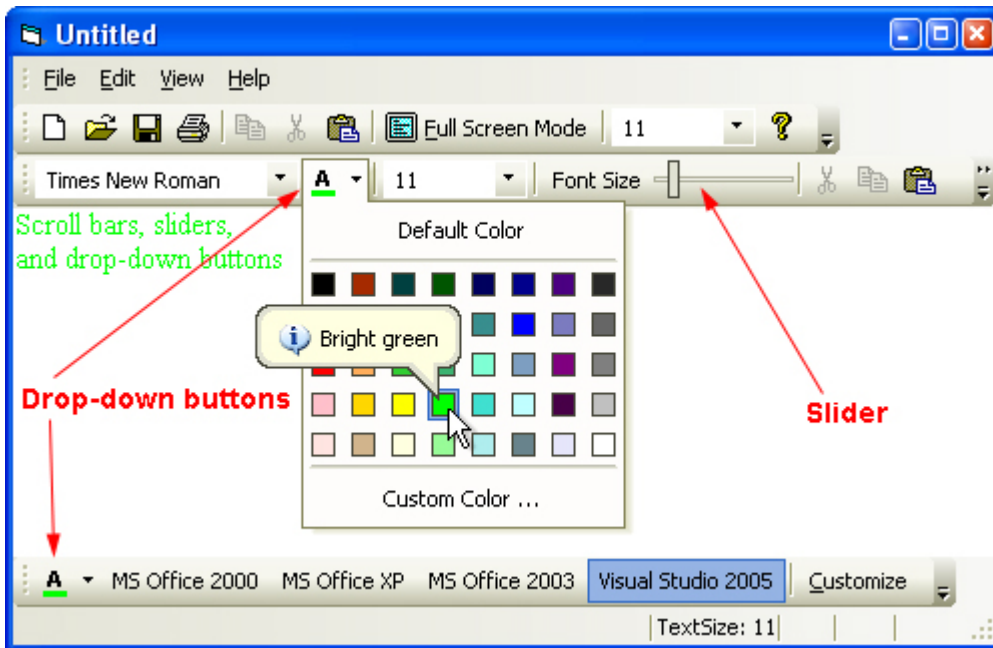


Scroll bar/slider and drop-down button

Sometimes, you may need to have one or more scroll bars/sliders and/or drop-down buttons. Frame Features allows you to easily put these controls on toolbars or add them to menus. In the Customize mode, you may make a copy of this control (field) and put it on wherever you want (e.g. on some toolbar or in a menu). Such cloned fields are consistent, that is, by changing the contents of a particular field, the other ones are modified synchronously by Frame Features.

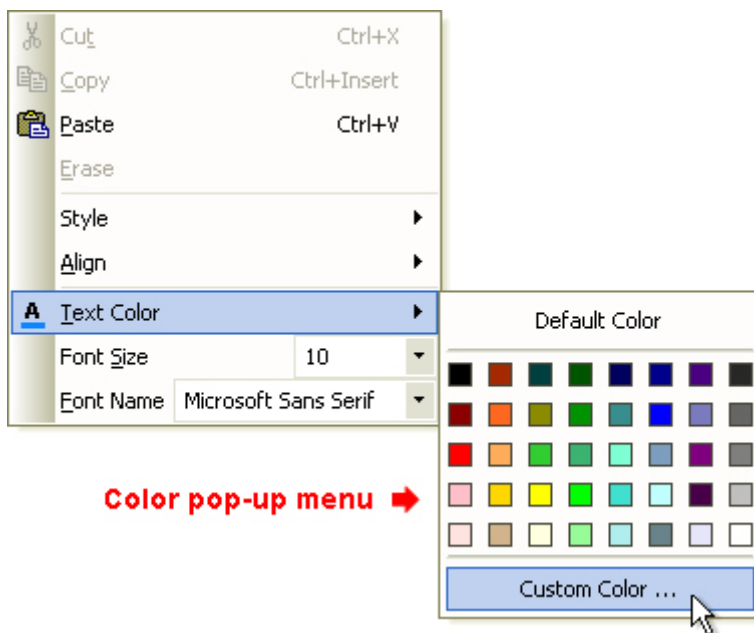
The scroll bar and the slider operate similarly to each other but the latter has no scroll bar buttons and its thumb is thinner.

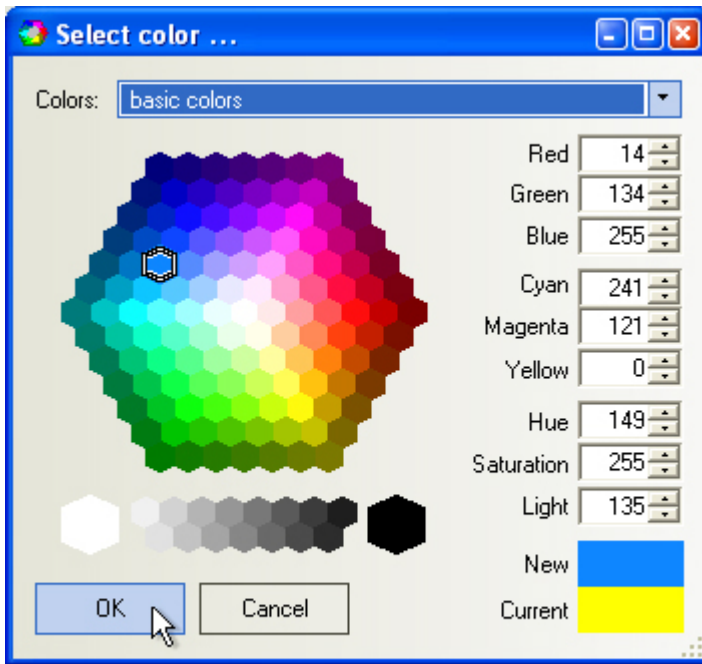
The drop-down button with its face divided into two parts serves as an ordinary button when its left part is clicked. On the other hand, when clicked on its right part, it drops down a menu and the selected item in this menu sets some value for the action when the button's left part is clicked.



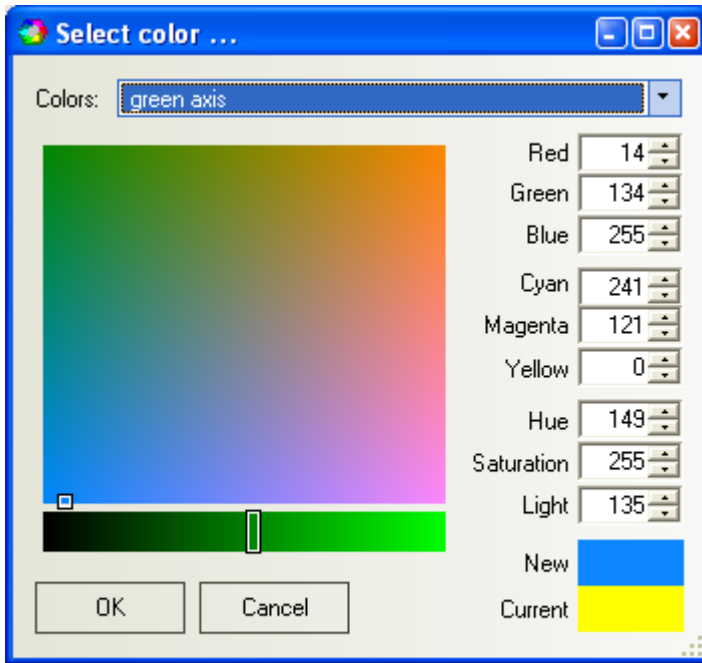
Color pop-up menu

The color pop-menu allows you to select either a predefined color or a custom color. In the latter case, display the Select color... dialog by clicking the Custom Color button and use one of the 15 available color picking methods including those based on RGB, HSL and CMYK color models.

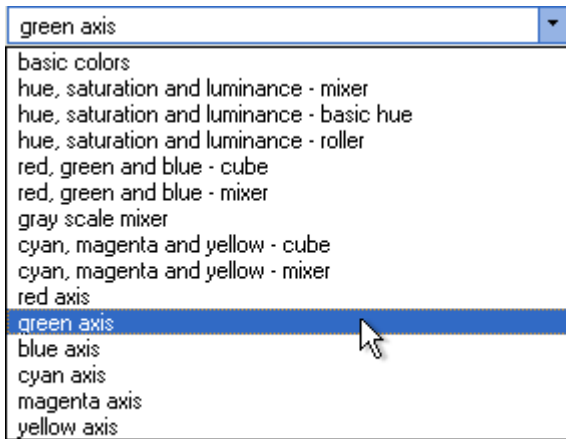




Color selection dialog — basic colors



Color selection dialog — green axis



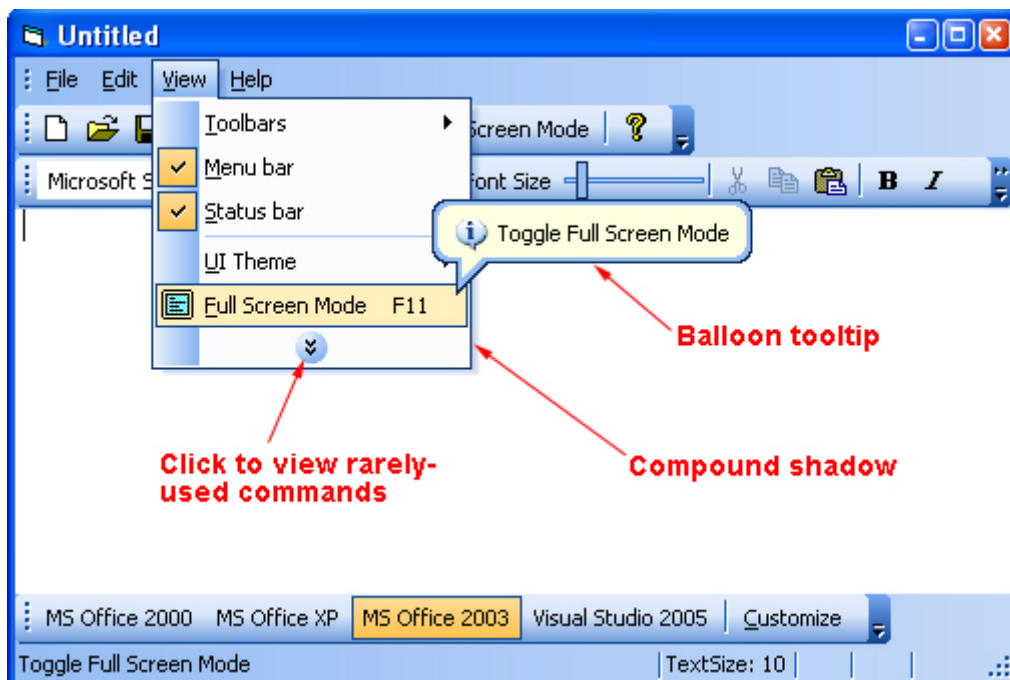
Available modes of color selection

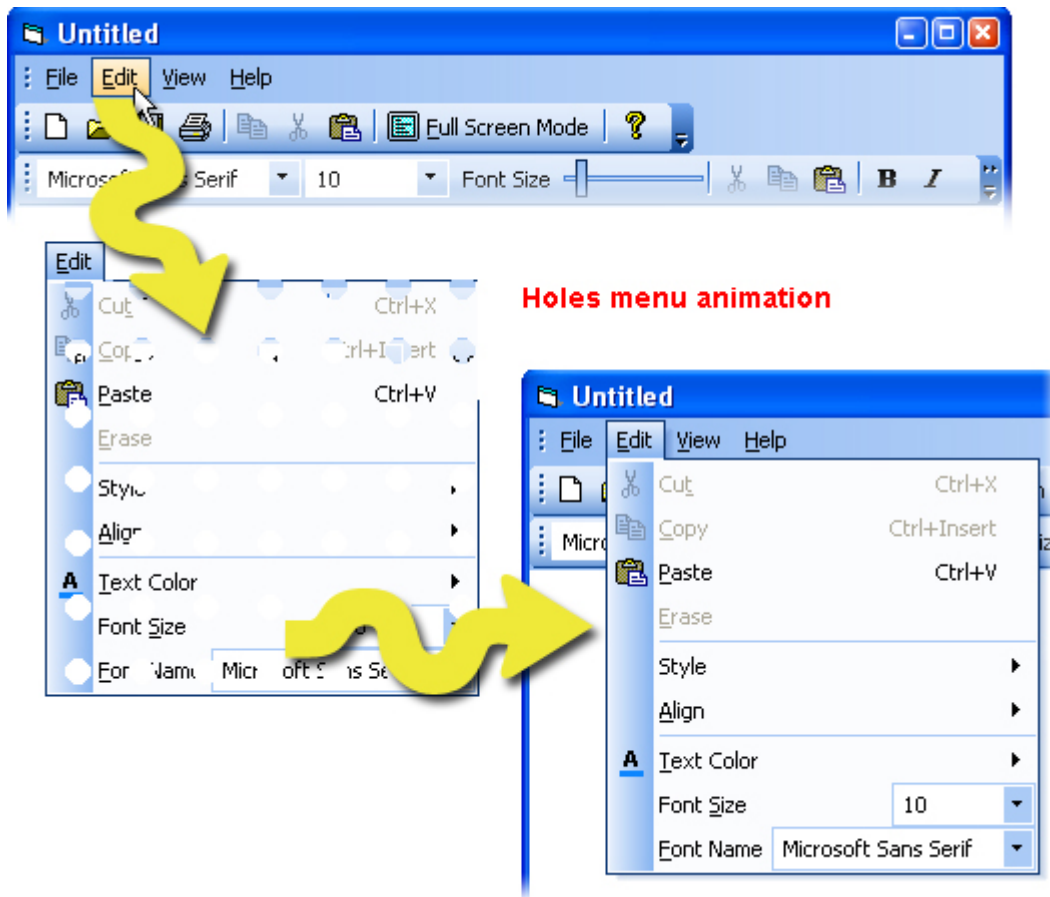
Menu features

The pop-up menu available in Frame features offers the developer many attractive features that go far beyond those available in standard development tools:

- The menu area is combined with that of its parent control like in Office XP
- An impressive set of menu animations (none, random, rollup, slide, fade, roll and stretch, noise, boxes, circles, and holes)
- Compound shadow support
- Built-in support for the command update mechanism of MFC
- Windows 2000-like non-rectangular tooltips
- Support for frequently/rarely used commands
- Expand animation when displaying rarely used commands

Any menu may have an unspecified number of submenus that enables the developer (at design time or programmatically) or the user (at runtime) to efficiently arrange commands available in the application.

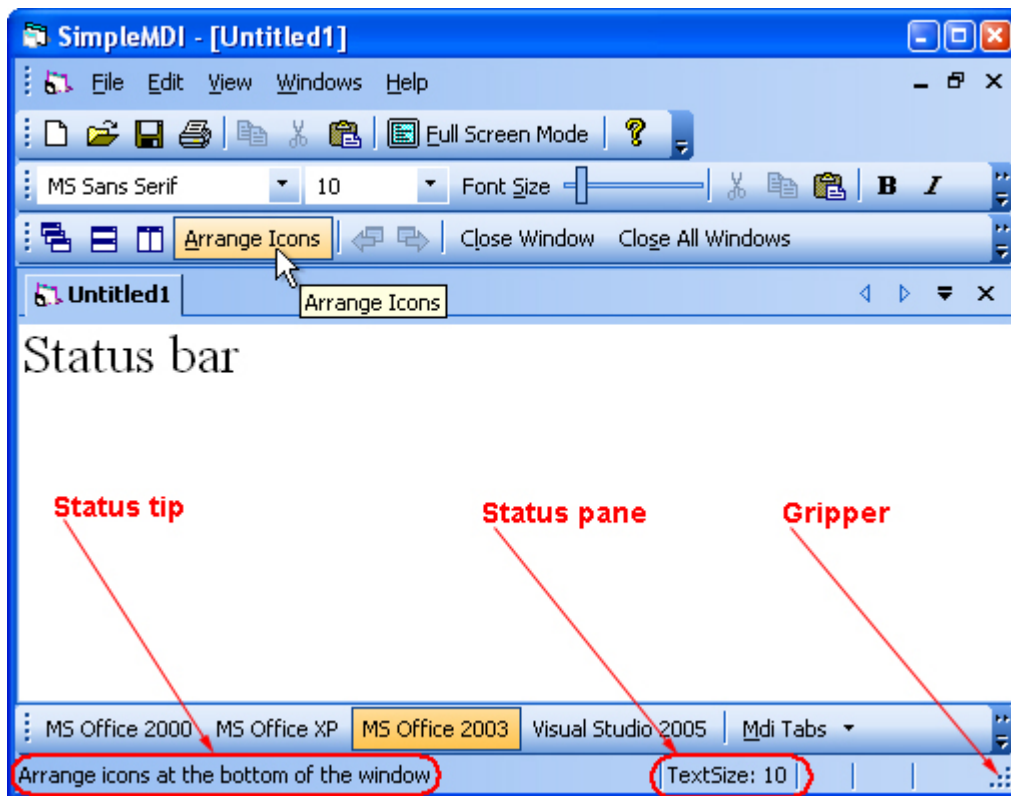




Status bar control

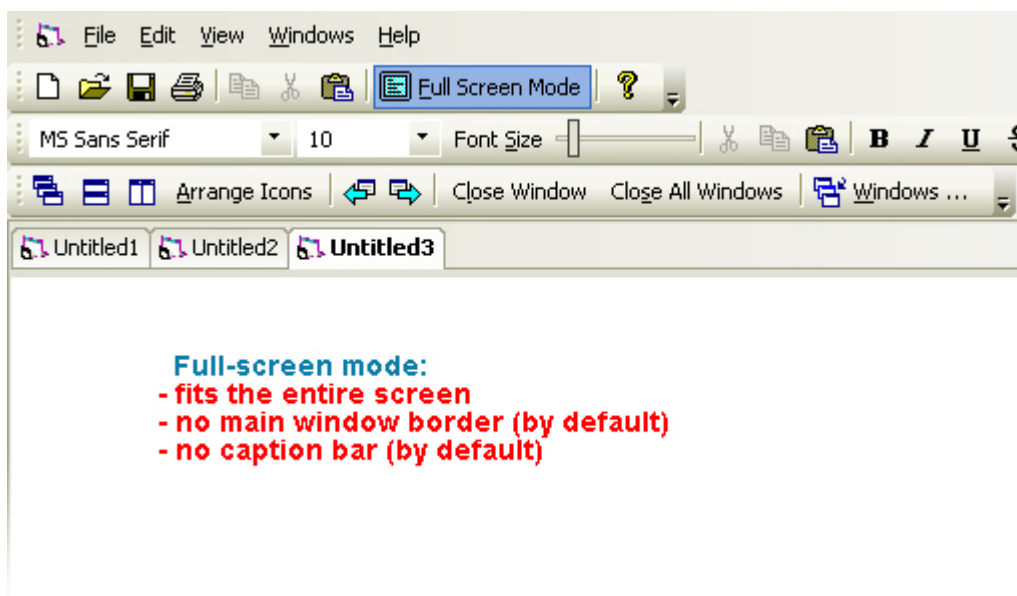
The status bar control provided with Frame Features allows you to:

- display the status tip associated with a particular command
- add an unspecified number of status panes for displaying some specific information
- display any status pane as enabled/disabled
- align left, center, or right the text in any pane
- visualize the gripper, which tells the user that the main window is resizable



Full-screen mode

Full-screen mode makes the open MDI/SDI window full screen hiding the title bar and the border of the main application window.



User interface persistence

Frame Features provides the user interface serialization with no extra effort from the developer. The default implementation serializes the user interface components to the Windows registry but Frames Features supports the serialization to a file too.

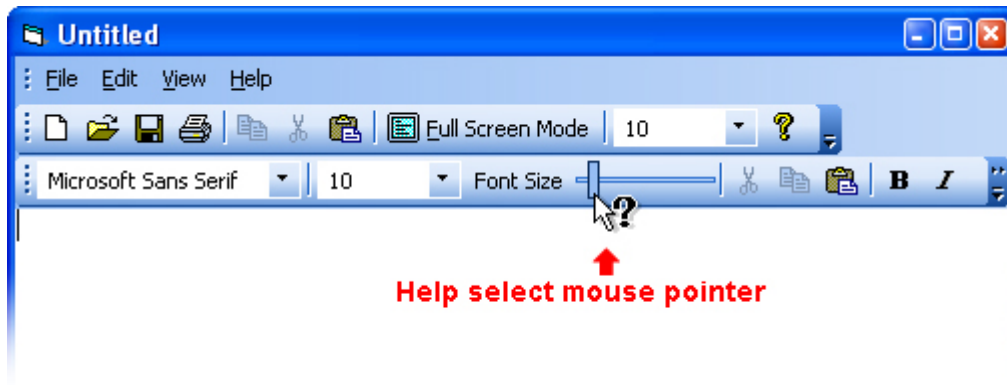
When the application starts/closes the following objects are saved/restored:

- size, position, and state of the main window
- position and state of the menu bar

- position and state of all toolbars including custom toolbars added in the Customize dialog
- arrangement of all command items including those cloned from the initial command items in the Customize mode

Context-sensitive help

The "What's This?" command is provided automatically by Frame Features. It allows the user to obtain contextual Help information about objects on the screen. The default shortcut for this command is **Shift-F1**.



Multiple monitor support

Multi-monitor support provided by Frame Features allows you to use two or more monitors simultaneously, with each of them being part of your desktop.

MBCS and Unicode versions

The Frame Features control comes both in the Multibyte Character Set (MBCS) and Unicode versions. The advantage of the MBCS version is that it works on any Windows OS including Windows 95/98. The Unicode version supports all the languages available in Frame Features including Chinese and Korean but cannot run on Windows 95/98.

Multilanguage support

The Unicode version of Frame Features automatically detects the primary language of the user's OS and automatically displays the text resources in it. The languages that are currently supported in Frame Features include:

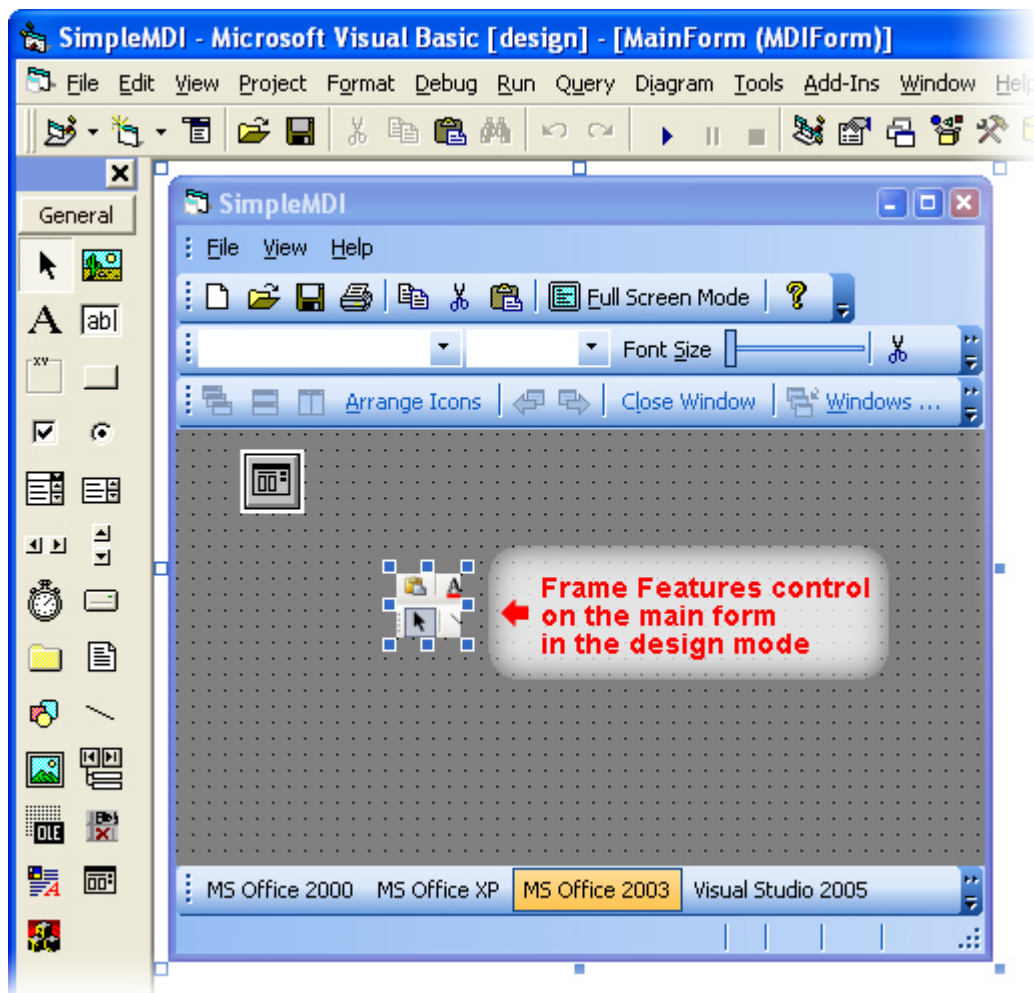
- Brazilian Portuguese
- Chinese
- Czech
- Danish
- German
- French
- Italian
- Japanese
- Korean
- Latvian

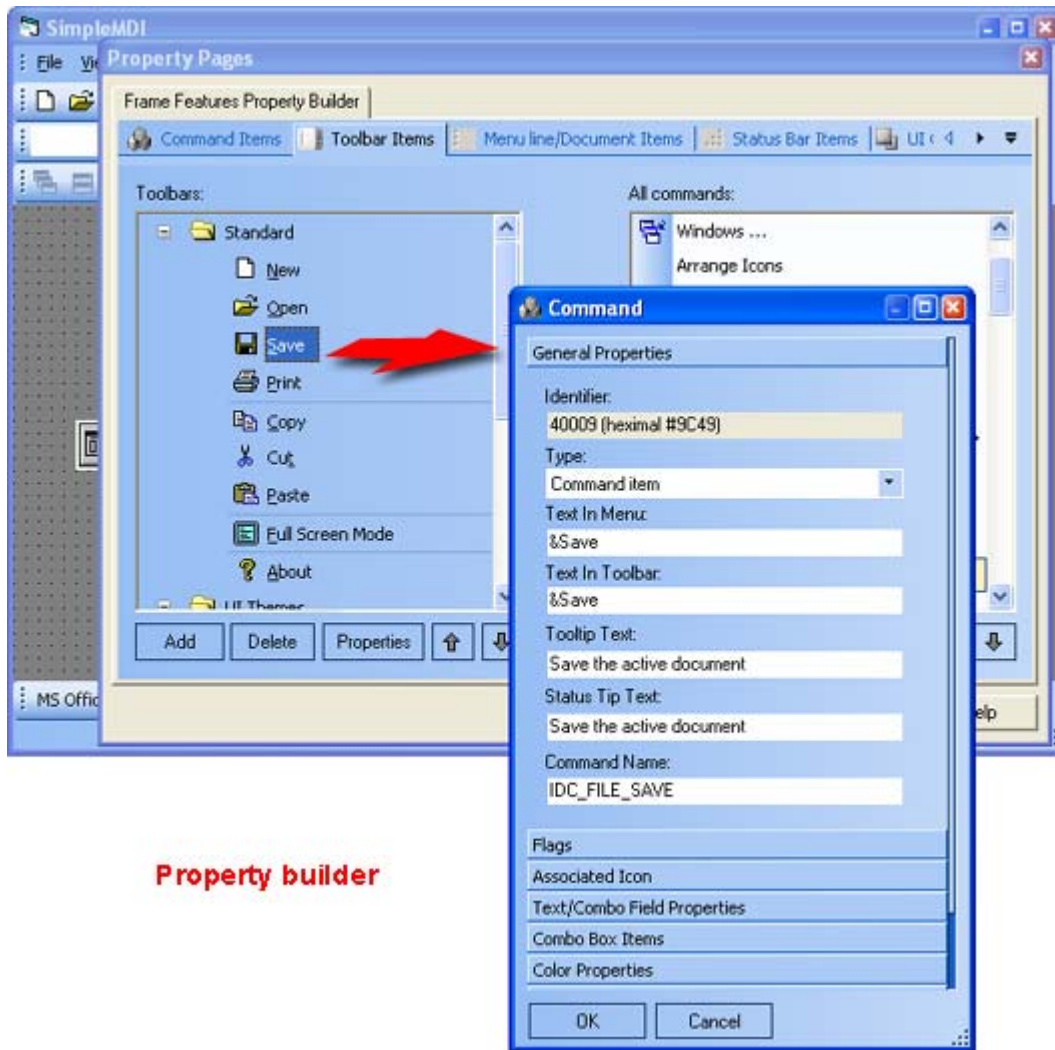
- Polish
- Russian
- Spanish
- Swedish
- Turkish
- Ukrainian

If the primary language of the operation system is not supported by Frame Features, then English is used by default.

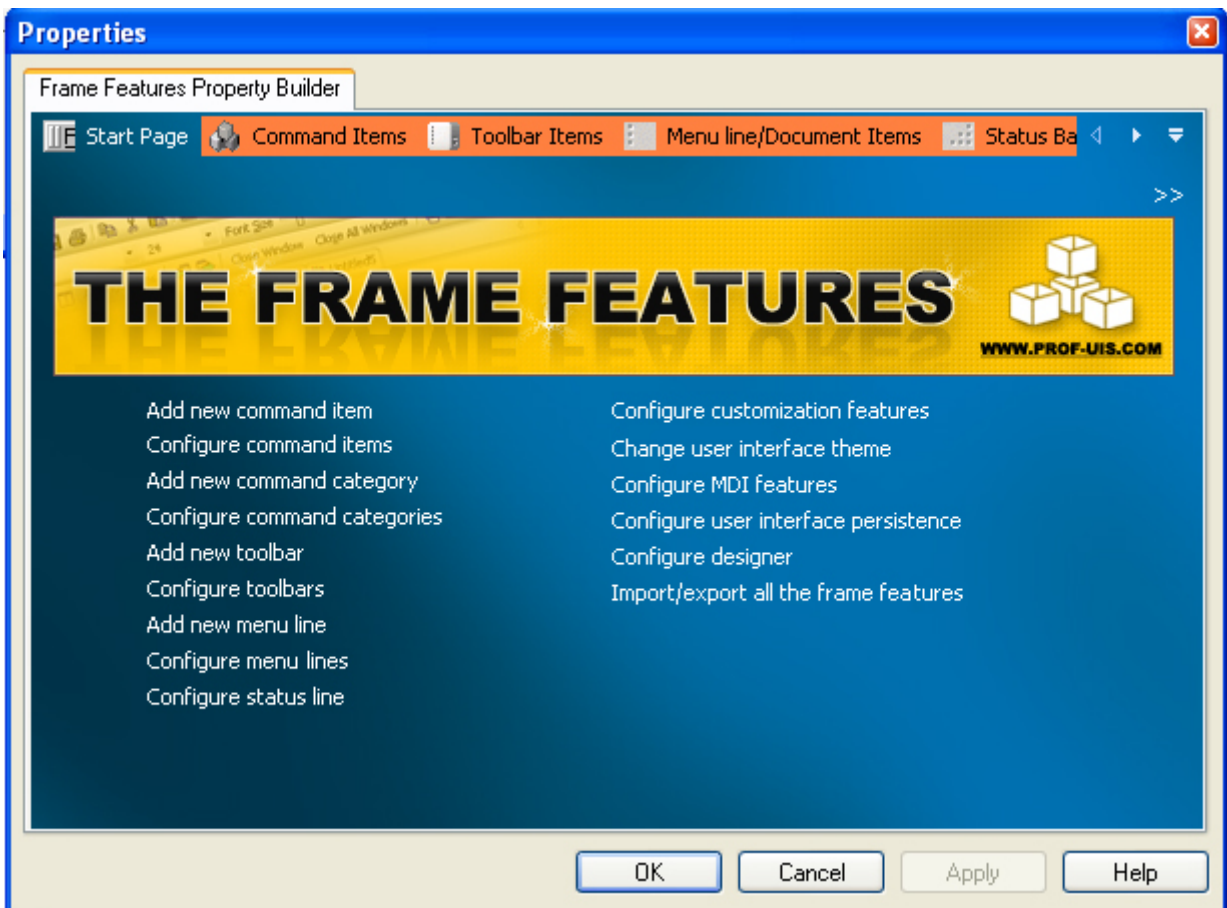
Complete control at design and runtime

The user interface features provided by the Frame Features ActiveX control can be implemented in the design mode or completely programmatically at runtime.





Property builder



Summary

Thank you for taking the time to read this document. We hope that you found it both informative and useful.

The Prof-UIS Team

FOSS Software, Inc.

<http://www.prof-uis.com>

The product names used in this document are for identification purposes only. All trademarks and registered trademarks are the property of their respective owners. Microsoft, Windows, Visual Studio, Visual Studio.NET, Visual C++ and Outlook are registered trademarks of Microsoft Corporation in the United States and/or other countries. 3D Studio MAX is a registered trademark of Autodesk, Inc. in the United States and/or other countries. Other product and company names may be the trademarks of their respective owners.