

General Data Sheet for Prof-UIS Frame Features v.1.2

Prof-UIS Frame Features is a powerful ActiveX control that is based on Prof-UIS and allows you to easily provide you applications with rich and up-to-date graphical user interfaces similar to those used in Microsoft Office XP/2003 and Visual Studio 2005.

Frame Features can be used in most of the form designers supporting the ActiveX container technology including:

- Visual Basic 6.0 and Visual Basic 7.0/7.1
- Visual Java++ 6.0 and J# 7.1/8.0
- C# 7.0/7.1/8.0 and
- Internet Explorer (HTA)

It can also be used in any other environment that provides access to a handle of the window in which the dockable windows supported by Frame Features should be displayed.

Key Features

- Microsoft Visual Studio 2005 and Office 2000/XP/2003 themes changeable on-the-fly
- Dockable menu bar with automatic support for the list of open MDI windows
- Dockable toolbars
- Fully customizable toolbars, menus, and keyboard accelerators
- MDI tabs
- MDI windows dialog
- System menu for the MDI/SDI main frame and MDI child frame window
- Context menu for the menu bar and toolbars
- Consistent resizable combo/edit fields in toolbars and menus
- Scroll bars/sliders and drop-down buttons in toolbars and menus
- Color pop-up menus
- Menu features: shadows, animation, frequently/rarely used commands, and tooltip window like in Windows 2000
- Enhanced status bar control
- Full-screen mode support
- User interface persistence to the system registry or to a file
- Context-sensitive help
- Multiple monitor support
- MBSC and Unicode versions
- Complete control over the implemented features both at design and runtime

Supported Operating Systems

- Windows 95/98/98SE/ME
- Windows NT 4.0/2000/XP
- Windows Server 2003

Supported Languages

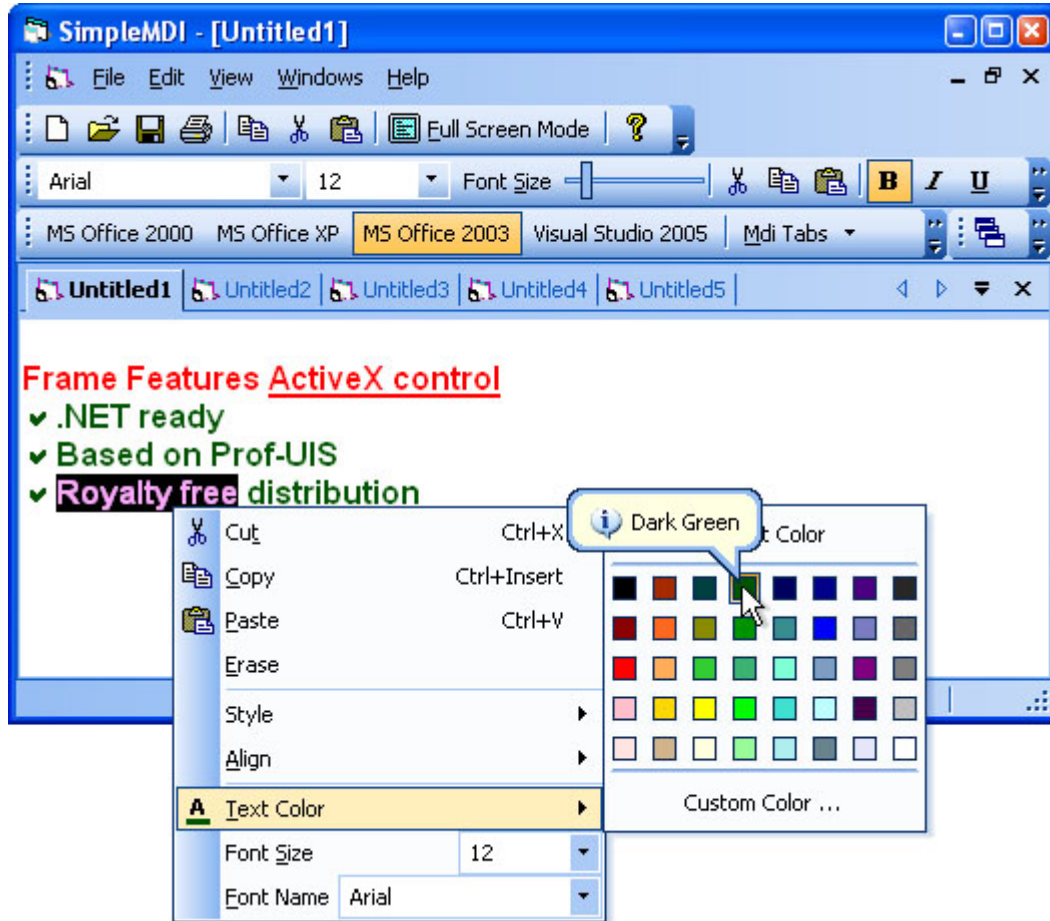
Brazilian Portuguese, Chinese, Czech, Danish, German, French, Italian, Japanese, Korean, Latvian, Polish, Russian, Spanish, Swedish, Turkish, and Ukrainian

FOSS Software, Inc.

151 Main St., Suite 3
Salem, NH 03079
Phones: (603) 894 6425, (603) 894 6427
Fax: (603) 251 0077
E-mail: info@prof-uis.com

Technical Support

Forum: <http://prof-uis.com/forum.aspx>
E-mail: support@prof-uis.com



The product names used in this document are for identification purposes only. All trademarks and registered trademarks are the property of their respective owners. Microsoft, Windows, Visual Studio, Visual Studio.NET, Visual C++ and Outlook are registered trademarks of Microsoft Corporation in the United States and/or other countries. 3D Studio MAX is a registered trademark of Autodesk, Inc. in the United States and/or other countries. Other product and company names may be the trademarks of their respective owners.